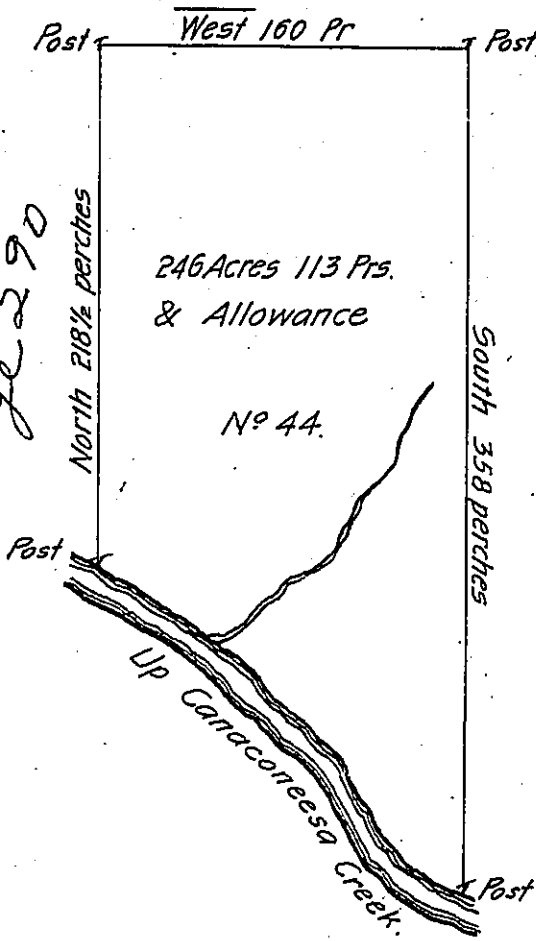


No 40

Part of District No 3

No 43  
Page 290



Dougllass district

Courses down the Creek

- N 79° W 9 Perches
  - N 49 W 10 P.
  - N 31 W 48 Pr.
  - N 40 W 24 Pr.
  - N 50 W 42 Pr.
  - N 45 W 28 Pr.
  - N 58 W 41 Pr.
  - N 68 W 18 Pr.
- 220

In pursuance of an Act of Assembly passed the 12<sup>th</sup> day of March 1783 for the sale of certain lands therein mentioned and by virtue of a Commission under the hand and Seal of Office of John Lukens Esq<sup>r</sup>. Surveyor Generall for the State of Pennsylvania to me directed bearing date at Philad<sup>a</sup> the 14<sup>th</sup> day of August 1783 the above tract of land containing two hundred and forty six acres and one hundred and thirteen perches with allowance of Six Pr. Cent for roads &ca. was surveyed on the 14<sup>th</sup> day of June 1785 by

Sam<sup>l</sup>. Nicholson

To John Lukens Esq<sup>r</sup>.  
Surveyor Generall

IN TESTIMONY that the above is a copy of the original remaining on file in the Department of Internal Affairs of Pennsylvania, made conformably to an Act of Assembly approved the 16th day of February, 1833, I have hereunto set my Hand and caused the Seal of said Department to be affixed at Harrisburg, this twenty third day of November 1903.

*James P. Brown*  
Secretary of Internal Affairs.